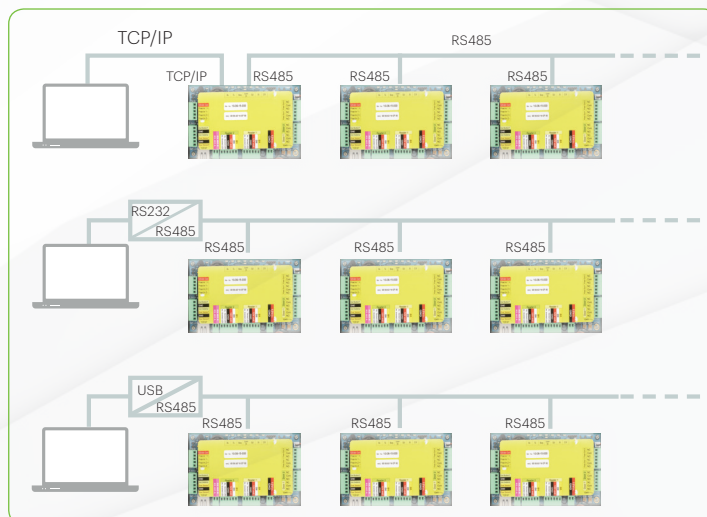
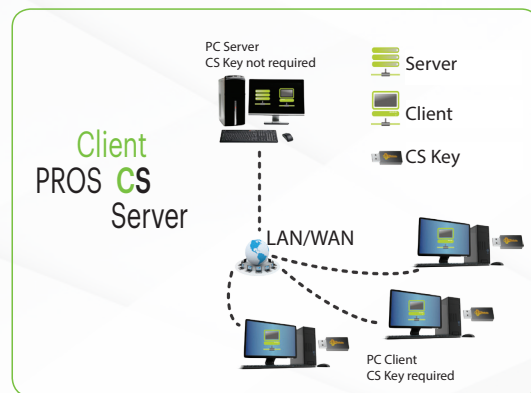
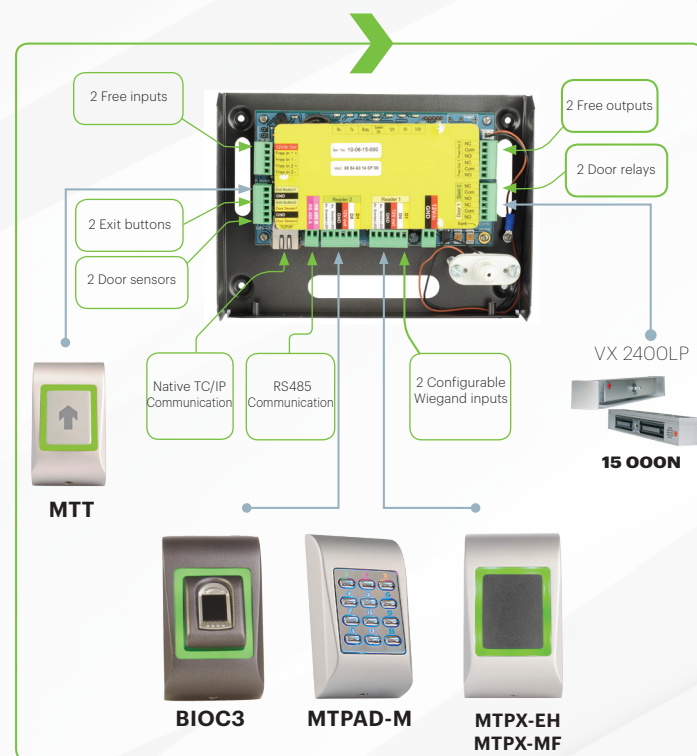


2 DOOR CONTROLLERS: EWS-EWSI

- > Up to 15.000 Users.
 - > Up to 30.000 Events per controller, unlimited per system.
 - > TCP/IP built in (in version EWSi).
 - > Programmable (Bitwise) Wiegand Interface (8 to 128 bit)
 - > Anti-pass back, timed anti-pass back and mantrap.
- Optional CS Key for additional client and remote access.



VX2400LP v.3

- ✓ Holding force real tested: ~15020N/~3371lbf/1502kgf.
- ✓ Voltage: 12VDC/ 24VDC.
- ✓ Current: 240/120mA.
- ✓ Locking monitoring: Long distance LED + small LED + Relay.
- ✓ Early Warning Alarm EW Technology: Fitted with EW pressure sensors and buzzer able to send an alarm before access forced opened.
- ✓ Corrosion Proof: No need armature plate push button to release the door.
- ✓ Dimensions (LxWxH): 218 x 35,5 x 30.
- ✓ Weight: ~1,3kgs.

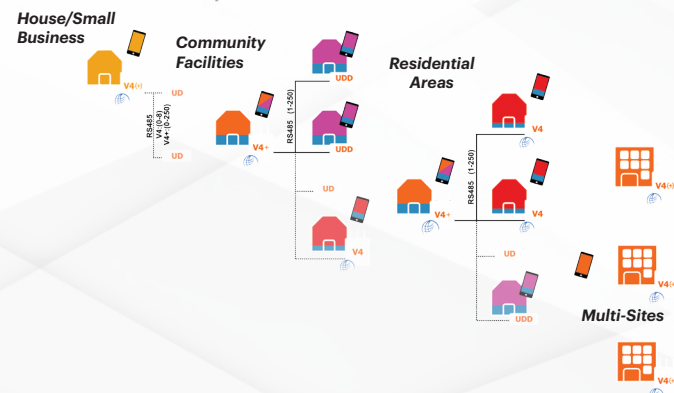
IGEM 3500

- ✓ Holding force: 3000N.
- ✓ Voltage: 12VDC/ 24VDC.
- ✓ Current: 500/250mA.
- ✓ Locking monitoring: Large L shaped LED for long distance status + Relay
- ✓ Corrosion Proof: Salt spray test. ISO 9227, ASTM B-117 90.
- ✓ Guaranteed No residual Magnetism. First quality of steel, resin and copper.
- No need armature plate push button to release the door.
- ✓ Dimensions (LxWxH) : 238 x 26 x 48mm.
- ✓ Weight: ~ 2kgs.

Varuna4 Home automation systems GTC professional

Universal Solution

TRADITIONAL WIRING - BUS - MULTI PROTOCOL RADIO - CPL
Opened on professional home automation protocols/GTC
Compatible for NEW and RETROFIT installations



Professional Solution

Reinforced bi-processor architecture
Without subscription, standalone and secured
Universal and unique programming concept



SURVEILLANCE AND ACCESS CONTROL

- > People and belongings surveillance
- > Secured management of accesses by code, tag, card, fingerprint, remote control,...
- > People headcount and localization
- > Alarms/Events notification
- > Dissuasion by presence (lighting, blinds, shutters, alarm bell, sound system...)
- > Supervised system: control, detect and warn any radio, bus or wire malfunction
- > Interaction on other functions (ex: lighting cut, heating or air conditioning turn down,...)

ENERGY MANAGEMENT

- > Multi-zone management of any type of heating or air conditioning with anticipation function (depending on outside temperature and zones ratio loss).
- > Selective single-phased or tri-phased power management, hot water tanks/ECS.
- > Energy instrument panel in compliance with RT2012/RT2020
- > Meters auto-reading.
- > Real and theoretical power consumption calculation
- > Graphical viewing and helping tools for consumption management

MULTIMEDIA

- > Recording and viewing on IP camera flow events.
- > Recording and listening via IP microphones.
- > Video door entry airing and other IP equipment (connected devices)
- > Widget provision (weather forecast, specific IP equipment interface, universal remote controls,...)

AUTOMATION

- > Lighting (all or nothing, variable, RVB) and electrical devices.
- > Openers and motors (portal, gate, garage doors, blinds, shutters, sun-blinds, ...)
- > Air treatment management (VMC, dehumidifier, hydrostat, pollution, ...)
- > Simple or complex automation programming via "variable universal actions" notion.
- > Time programming.
- > Life storyline (also actived on geographical localisation).
- > Script (in clear language) allowing to complete "variable universal actions" in particular and in-depth cases.

TECHNICAL AND MEDICAL SURVEILLANCE

- > Fire, gas leaks, flooding, temperature...
- > Weather forecast sensors (light, temperature, air humidity, anemometer, wheatercock, UV, air quality, rain, solar azimuth,...)
- > Technical sensors: pressure, liquid level, chemical measurement, speed, position,...
- > Distress alarm via medallion/bracelet or on extended lack of movement.

COMMUNICATION and INVENTORY

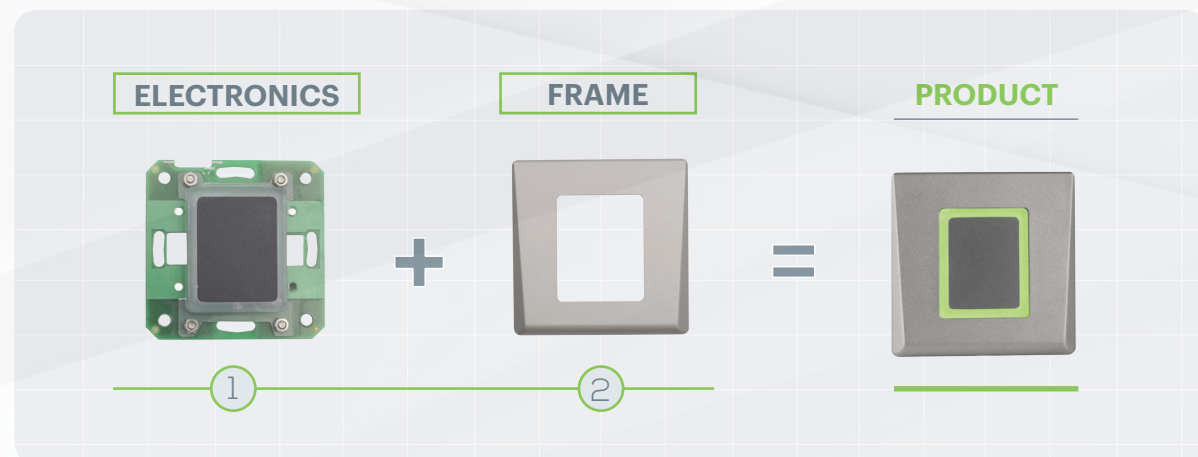
- > Standalone and secured supervision of any type of terminal.
- > Events notifications by email, text, telesurveillance, push notif and web service.
- > System interface with third party equipment via HTTP command.
- > Personalised statistical data follow-up.



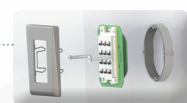
ACCESS CONTROL
LOCKING SOLUTIONS
HOME AUTOMATION



CHOOSE AND MAKE THE READER SUITABLE FOR YOU



- › Single and dual technology.
- › Network or standalone .
- › The DIN range front covers are available in single or dual, vertical or horizontal to combine different technologies side by side in an aesthetic and design appearance.
- › Easy installation: compatible with single or double gang back boxes.....



ELECTRONICS



FRAMES



+

=

PRODUCT



MORE...

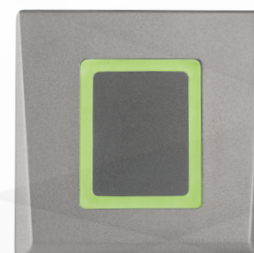


COMMON FEATURES OF THE DIN RANGE

Frame: ABS
Frame model: Single, Horizontal Double, Vertical Double
Colours: Silver, Charcoal or White
Mounting: Electrical flush back box
Wiring: Terminal block
IP rating: 40 (inside use)
Temperature: -15° to +40°C

DINMTPX-MF

- › Multi-Wiegand 26, 34, 42, 58, 24, 32, 40, 56 bit
- › Mifare Classic, Ultralight, Desfire (13,56MHZ)
- › Reading distance: max. 6cm
- › Large square LED for visual indication
- › Power: 9-14V DC



DINMTPX-EH

- › Multi-Wiegand 24, 26, 32, 34, 35, 37, 40, 42 (by default in Wiegand 26 bits)
- › EM 4100/EM4002 et HID (125KHz) compatible
- › Reading distance: 8 cm
- › Large square LED for visual indication
- › Power: 9-14V DC



DINPAD

- › Backlit metallic keys
- › 2 relays (3A/24V DC, 230V AC)
- › 99 users
- › Push button input
- › Antitamper when keypad opened or dismantled



DINPAD-M

- › Compatible with Wiegand 26, 30, 34, 40 bit, Clock & Data or Codix.
- › Backlit Metallic keys
- › Power 9-14V DC
- › Slave Devices: DINMTPX-EH & DINMTPX-MF



DINB100

- › Swipe capacitive sensor
- › 100 users
- › Adjustable Wiegand protocol (8 to 128-bit)
- › Communication interface by RS485 for programming software, I2C for slave device and Wiegand for control panel
- › Power: 12V DC
- › Slave devices: DINMTPX-EH, DINMTPX-MF, DINPAD-M



DINB100-SA

- › Swipe capacitive sensor
- › 1 Relay (2A, 24V AC/DC)
- › 97+3 users
- › Push button input
- › Easy programing by scrolling and tapping on the sensor



DINMTT

- › Sensitive push button
- › Complete button lighting (square LED) + buzzer
- › Temporisation: ON/OFF or timed (3, 5 or 10 seconds)
- › Touch sensitive technology
- › Relay 1A (NO/C/NC)
- › Power: 12-24V DC, 15-24V AC



DINRTT

- › Remote Relay Unit
- › Touch sensitive technology
- › 2 push button input
- › Power: 12V DC
- › Compatible with standalone biometric readers (DINB100-SA & B100-SA)



DINBIOC3 Capacitive touch sensor

- › Up to 9500 users
- › Slave devices: DINMTPX-EH, DINMTPX-MF, DINPAD-M
- › Communication interface by RS485 for programming software, I2C for slave device and Wiegand for control panel.
- › Power: 12V DC



COMMON FEATURES

Housing: Moulded aluminium.
Colors: Silver, charcoal or white.
Outdoor use

Dimensions (mm): 92x51x25 (single housing), 100x94x30 (double housing)

B100

- › Swipe capacitive sensor
- › 100 users
- › Adjustable Wiegand protocol (8 to 128-bit) done through PC
- › Configuration and user management done by software
- › Resin potted electronic
- › Power: 12V DC



B100-SA

- › Swipe capacitive sensor
- › 1 Relay (2A, 24V AC/DC)
- › 97+3 users
- › Push button input
- › Easy programing by scrolling and tapping on the sensor
- › Resin potted electronic
- › Power: 9-14V CC

MTPAD

- › Backlit metallic keys
- › 1 relay (2A) & 1 transistor (250mA)
- › 99 users
- › Push button input
- › Resin potted electronic
- › Antitamper when keypad opened or dismantled
- › Automatic power select 12-24V DC, 15-24V AC



MTPAD-M

- › Moulded aluminium housing
- › Backlit metallic keys
- › Compatible with Wiegand 26, 30, 34, 40 bit, Clock & Data or Codix
- › 99 users
- › Resin potted electronic
- › Antitamper when keypad opened or dismantled

MTPX-MF

- › Adjustable Wiegand protocol (8 to 128bit)
- › Mifare Classic, Ultralight, Desfire (13,56MHZ)
- › Reading distance: Up to 3cm
- › Large square LED for visual indication
- › Resin potted electronic
- › Power: 8-14V DC



MTPX-EH

- › Multi-Wiegand 24, 26, 32, 34, 35, 37, 40, 42
- › EM 4100/EM4002 et HID (125KHz) compatible
- › Reading distance: Up to 5 cm
- › Large square LED for visual indication
- › Resin potted electronic
- › Power: 9-14V DC



BIOC3

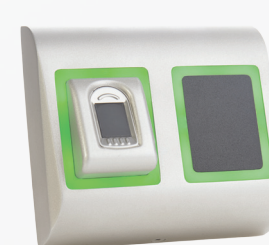
- › Capacitive touch sensor. Up to 9500 users
- › Communication protocols: Wiegand 8 to 128 bits
- › Protocol programming by PROS CS software (EWS system) and BIOMANAGER CS
- › IP 54: Internal use only
- › Power: 12V DC



DOUBLE TECHNOLOGY

BIOPAD-M

- › Adjustable Wiegand protocol (8 to 128bit)
- › 9500 users
- › Capacitive touch sensor
- › PIN code length: 1 to 8 digits
- › Large square LED for visual indication
- › Resin potted electronic
- › Power: 12V DC



BIOPROX-EH

- › Adjustable Wiegand protocol (8 to 128bit)
- › 9500 users
- › Capacitive touch sensor
- › EM 4100/EM4002 and HID (125KHz) compatible
- › Reading distance: up to 5 cm
- › Large square LED for visual indication
- › Resin potted electronic
- › Power: 12V DC



B100PROX-MF

- › ABS housing
- › Adjustable Wiegand protocol (8 to 128bit)
- › 100 users - unlimited with Finger on card mode
- › Capacitive swipe sensor
- › Mifare Classic, Ultralight, Desfire (13,56MHZ)
- › Reading distance: up to 5 cm
- › Large square LED for visual indication
- › Resin potted electronic
- › Power: 12V DC



PADPROX-EH

- › Wiegand 26, 30, 34, 40 bit, Clock & Data
- › 9500 users
- › EM 4100/EM4002 and HID (125KHz) compatible
- › Reading distance: 2 to 5 cm
- › PIN code length: 1 to 8 digits
- › Large square LED for visual indication
- › Resin potted electronic
- › Power: 9-14V DC